

Piraeus as a Global Logistics Hub

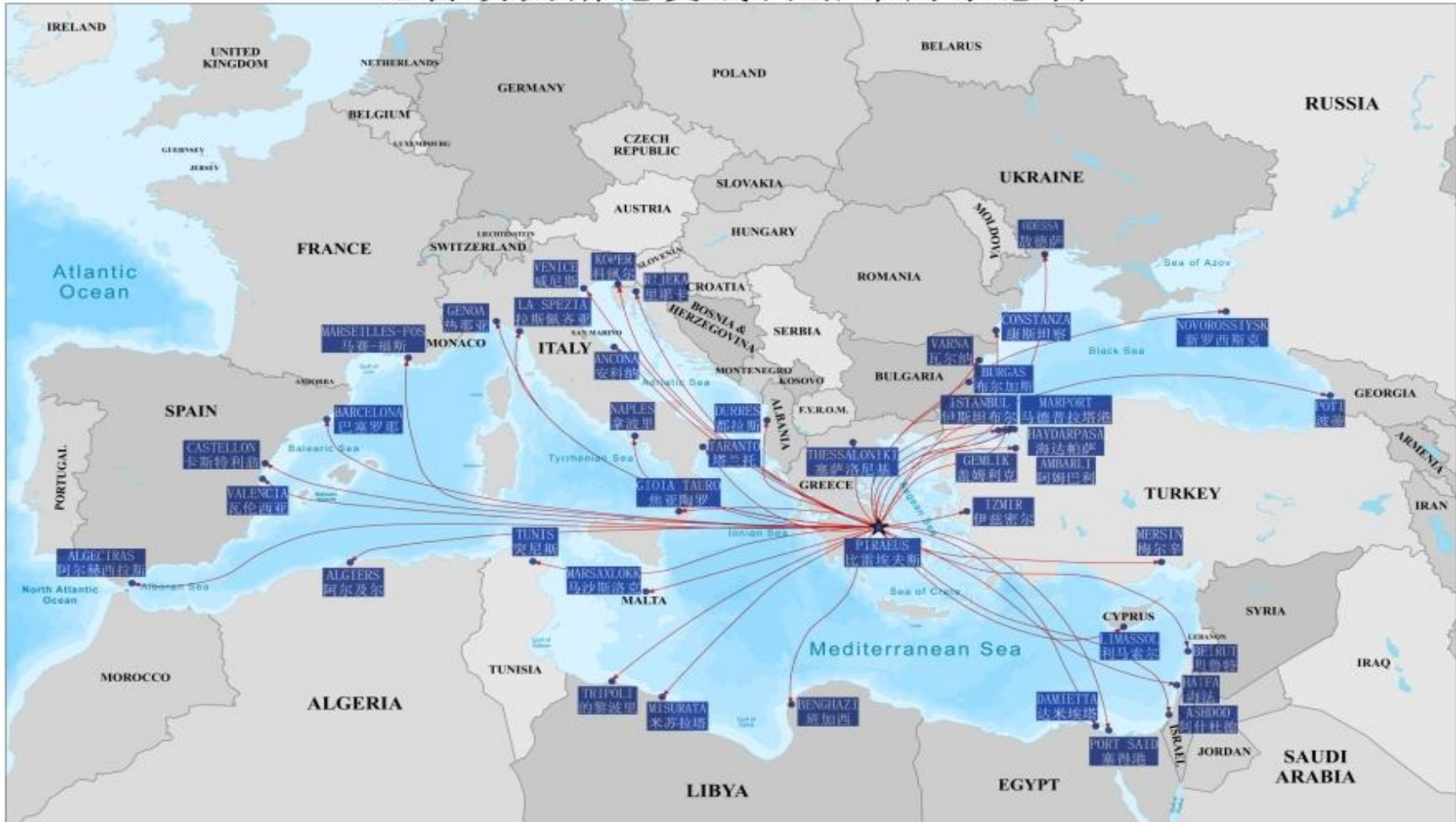


Europe – Middle East – Africa (EMEA)

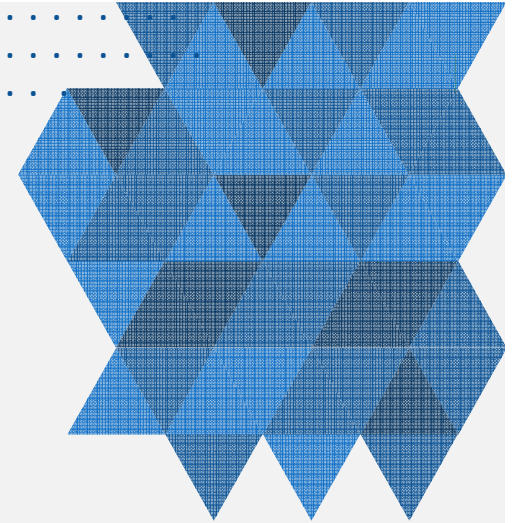


The Feeder Network Layout of Piraeus

比雷埃夫斯港支线网络布局示意图



Link with the European Rail Network



The Piraeus Container Terminal is linked with the European Rail Network with its owned Rail Ramp. Based on its facilities - able to handle up to 10 trains per day - is in a position to offer reliable rail transportation solutions from Piraeus Port to Central Europe & Balkans.

We are in a position, depending on clients' needs, to provide dedicated BLOCK TRAIN facilities from Piraeus Port to Central Europe & Balkans.

TAT from Piraeus Container Terminal's Rail Ramp (in days)

Poland, Germany	4-5
Czech, Austria, Slovakia, Hungary	3-4
Romania	2-3
Bulgaria, Serbia	1-2

Port of Piraeus Gateway

Port of Piraeus

- Located at the geographic crossroads of international trade and commerce
- Centrally between the European, Middle Eastern and African markets
- The perfect logistics gateway for these regions with connecting inland and coastal infrastructure playing a vital role



Port of Piraeus Gateway

Port of Piraeus

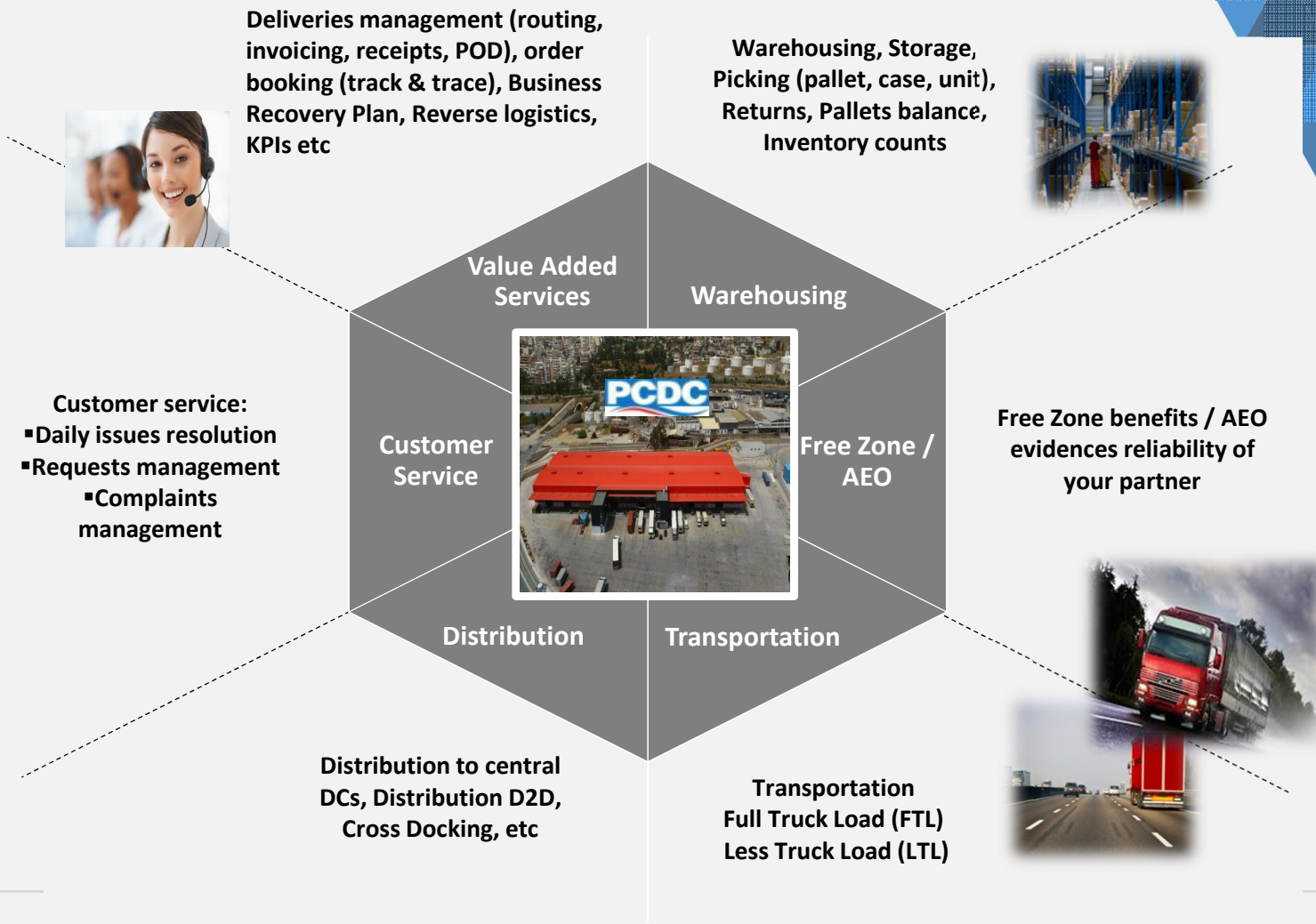
- Supporting the 21st-century "Maritime Silk Road" initiative, a development strategy and framework proposed by P.R. of China that focuses on connectivity and cooperation among countries primarily in Eurasia



A new operating warehouse operating in Free Zone



LCL & LTL Services



THROUGHPUT of Containers 2010-2015

PIRAEUS

	2010 TEUs	2011 TEUs	2012 TEUs	2013 TEUs	2014 TEUs	2015* TEUs
PPA	194.083	502.321	695.470	651.000	633.642	350.000
P.C.T	685.440	1.188.148	2.108.088	2.520.000	2.987.106	3.034.000
ΣΥΝΟΛΟ	879.523	1.690.469	2.803.558	3.171.000	3.620.748	3.584.000

YEAR	WORLD TOP 100				
	2010	2011	2012	2013	2014
PIRAEUS PORT	93	72	46	42	38

RECONSTRUCTED & UPGRADED PIER II

Pier II	East Side	West Side
Operational Quayside	780 meters	700 meters
Safe draft	14.5 meters	16.5 meters
QC Cranes	10 QCs	8 QCs
Out of which 12 PP QCs through Concession & 6 new SPP QC's were added		
RMGs	16 semi – automated RMGs	
E-RTGs	20 E-RTGs replaced Straddle Carriers 1 E-RTG operates in the Rail ramp	
Reefer Points	760 reefer plugs for 1090 reefer Teus	
Throughput	3.2 million Teus	



PIER III EAST & WEST



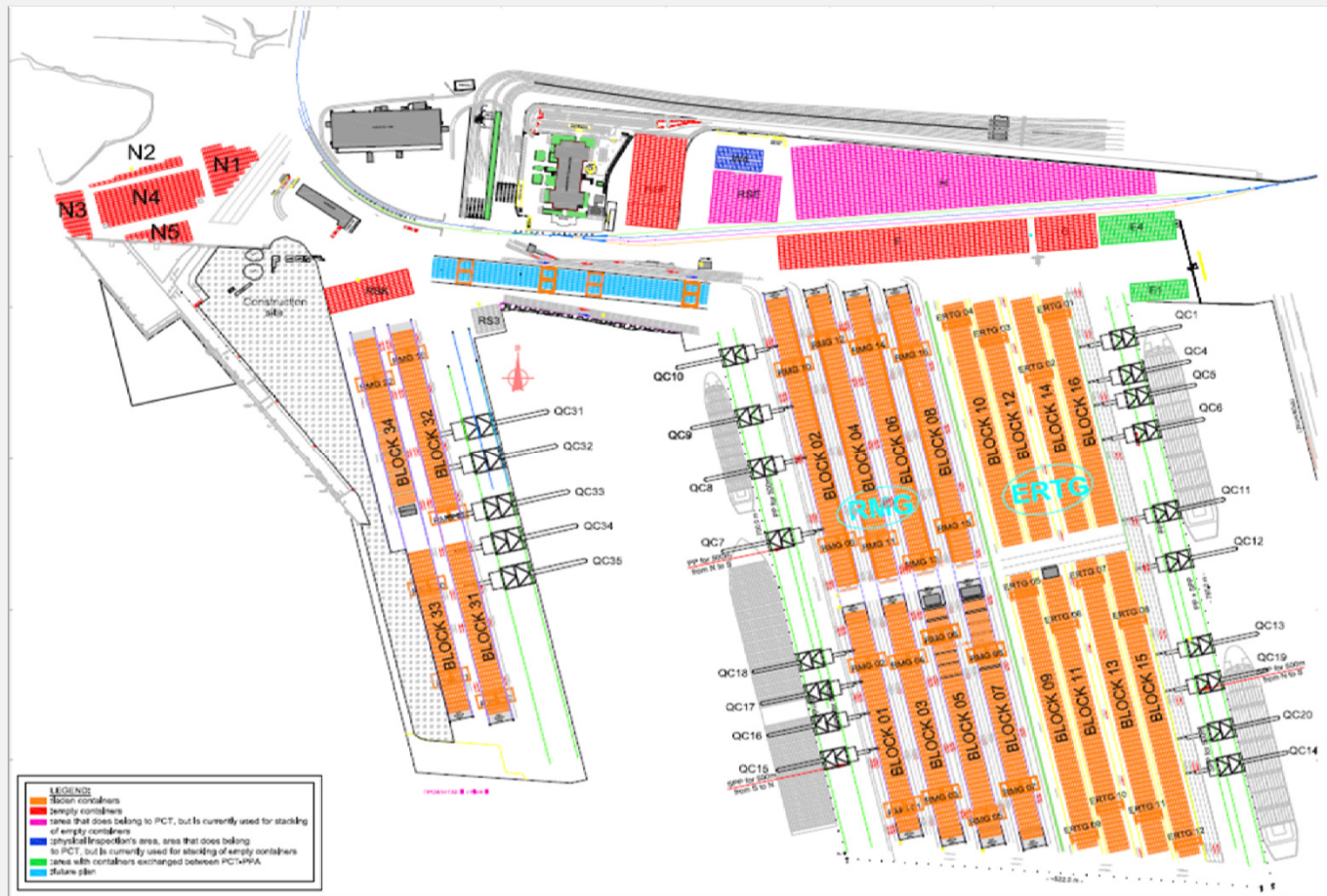
Pier III	East Side	West Side (under construction)*
Operational Quayside	600 meters	800 meters
Safe draft	18.5 meters	18.5 meters
QC Cranes	5 SSPP QCs new generation 26 rows, out reaches 72 meters. 2 more SPP QCs to be installed mid 2015.	8 twin-lift transporter container cranes
RMGs	9 semi – automated RMGs	24 automated RMGs
Reefer Points	360 reefer plugs	1000 reefer plugs
Throughput	1.1 million Teus	1.9 million Teus

*The 1st Phase is to be completed by September, 2016.

CONSTRUCTION PIER III WEST

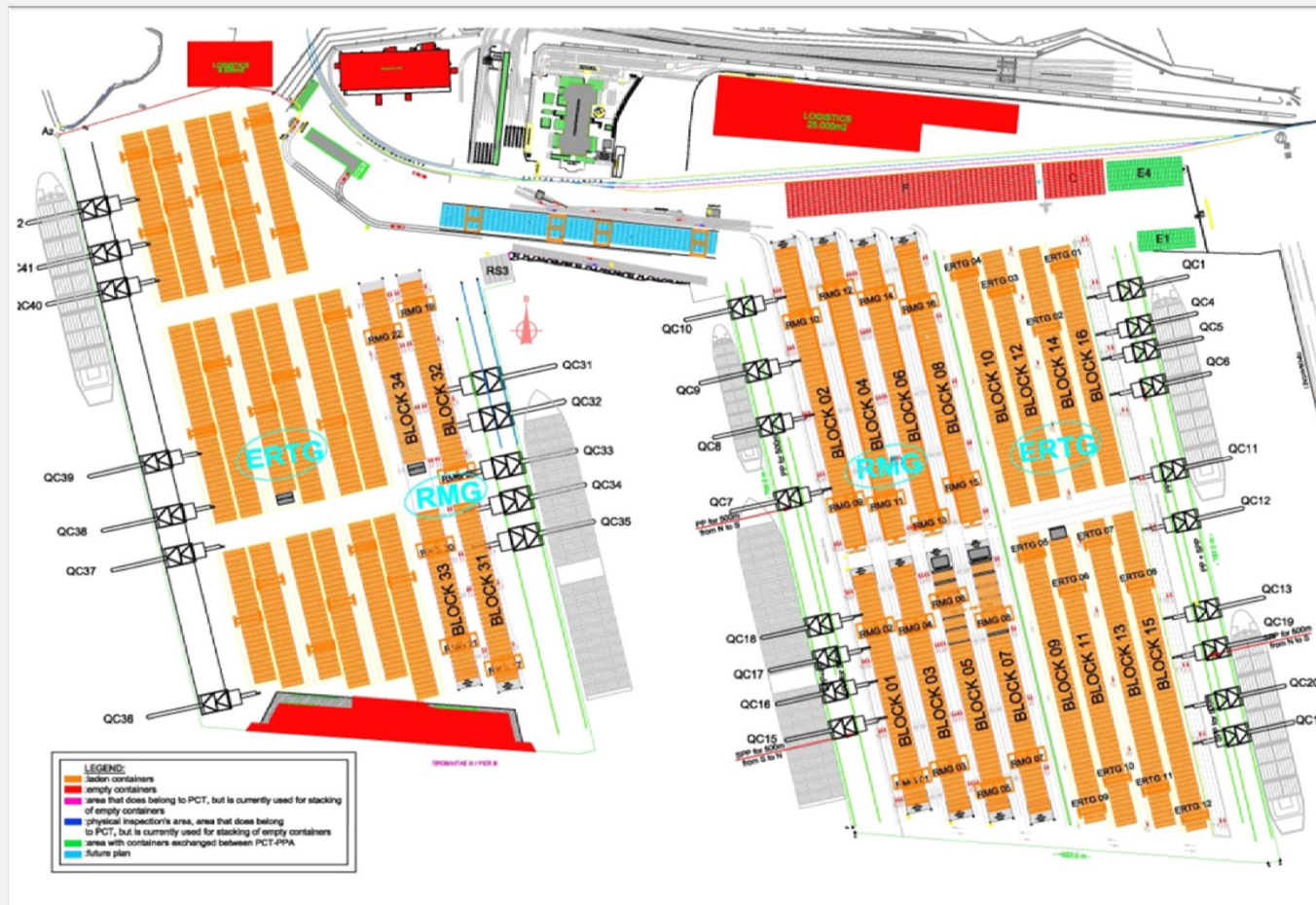


Piraeus Container Terminal - Capacity



Terminal Capacity **Dec. 2013**: Pier II: 3,2 M TEU - Pier III: 1,6 M TEU - **TOTAL: 4,8 M TEU**

Piraeus Container Terminal - Capacity



Future Terminal Capacity **Oct. 2017** : Pier II: 3,2M TEU -Pier III: 3,0M TEU - **TOTAL: 6,2M TEU**

An aerial photograph of a large port area with several cargo ships docked at piers. The piers are filled with stacks of colorful shipping containers. In the background, a densely populated city is built on a hillside, with mountains visible in the distance. The entire image has a light blue tint.

**THANK YOU
FOR YOUR ATTENTION**