

CLYDE&CO

Game Changers in Shipping

Panel Discussion

Moderated by John R. Keough



Panel Members

Moderator:

John R. Keough, Partner – Clyde & Co

Panel:

Mark O'Neil, President – Columbia Shipmanagement

Knut Ørbeck-Nilssen, CEO – DNV GL - Maritime

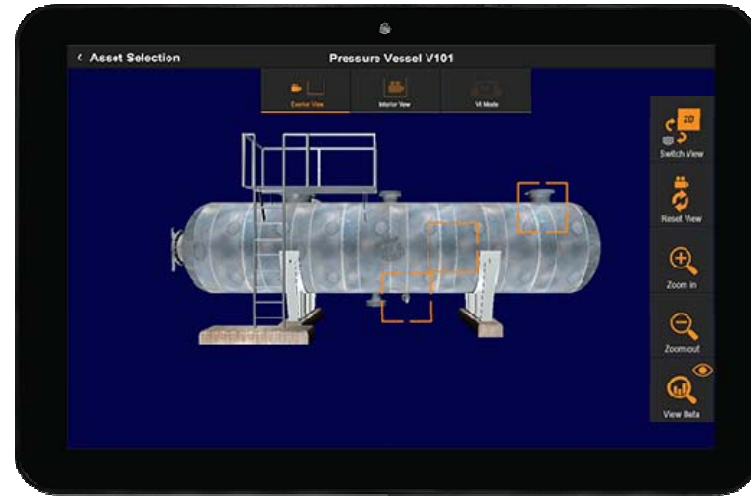
Mats Berglund, CEO – Pacific Basin Shipping Limited

Despina Panayiotou Theodosiou, Co-CEO – Tototheo Maritime;
President – WISTA International

Global Sulfur Caps: Updates



Optimizing Performance with Technology



Venezuela Sanctions



“Homeland, Socialism or Death”

North Korea Sanctions and Deceptive Shipping Practices

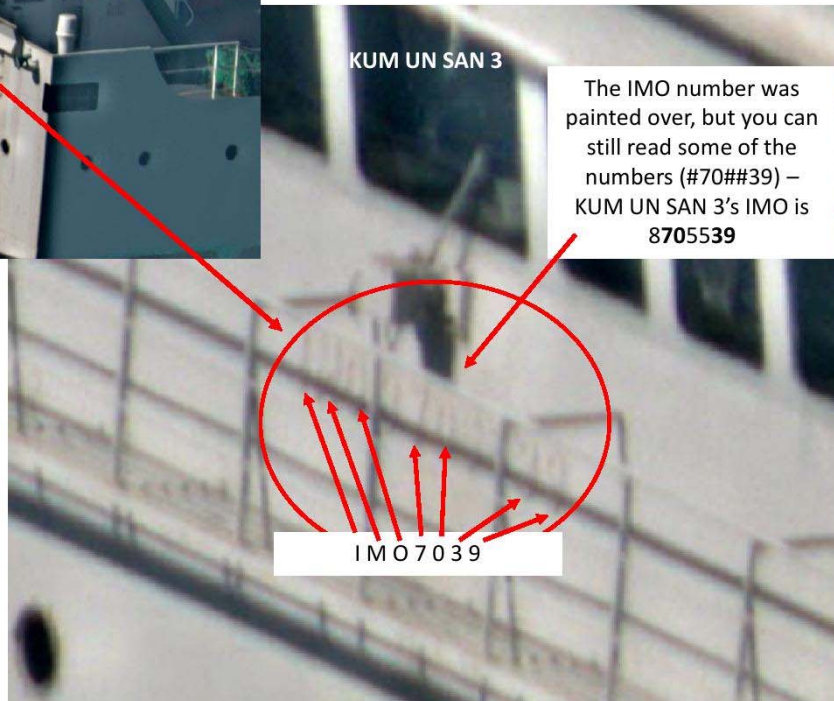
06 December
2017
0328-0332 GMT
31-26N 124-31E

UNCLASSIFIED



KUM UN SAN 3

The IMO number was painted over, but you can still read some of the numbers (#70##39) – KUM UN SAN 3's IMO is 8705539



UNCLASSIFIED

Kidnapping Risks in West Africa



The moderator acknowledges with gratitude the valuable contribution of Mark O'Neil, Knut Ørbeck-Nilssen, Mats Berglund and Despina Panayiotou Theodosiou, and notes with appreciation the assistance of Robert Adams, associate, Clyde & Co US

CLYDE&CO

Thank You.

**John R. Keough, Partner
Clyde & Co US LLP
The Chrysler Building
405 Lexington Avenue, 16th Floor
New York, NY 10174
212 – 710 – 3983
john.keough@Clydeco.us**

390

Partners

1,500

Legal
professionals

3300

Total staff

50+

Offices and associated
offices in 18 countries

Clyde & Co US LLP accepts no responsibility for loss occasioned to any person acting or refraining from acting as a result of material contained in this summary. No part of this summary may be used, reproduced, stored in a retrieval system or transmitted in any form or by any means, electronic, mechanical, photocopying, reading or otherwise without the prior permission of Clyde & Co US LLP.
© Clyde & Co US LLP 2016