



10th Annual Capital Link Greek Shipping Forum

"Opportunities & Challenges"

Friday, February 22, 2019 - Athens, Greece

IN COOPERATION WITH



LEAD SPONSOR



GLOBAL LEAD SPONSOR



GLOBAL GOLD SPONSORS



GLOBAL SPONSORS



EVENT SPONSORS



SUPPORTING SPONSORS



SPEAKERS DINNER SPONSOR



AWARD RECIPIENT CAPTAIN PARIS DRAGNIS



BREAKFAST SPONSOR



BAGS SPONSOR



LANYARDS SPONSOR



COFFEE SPONSORS



SUPPORTING ORGANIZATIONS



MEDIA PARTNERS





% REMAINING

00:00:00.000

TIME ELAPSED

LAUNCHING JUNE 12TH
AT 6PM EDT

MADISON, WI 53703 | 1-800-828-8282

Vessel Deconstruction I

Originated by Global Marine Transport Capital

10.25%
Annual Interest *24 months
Term *

\$100,000

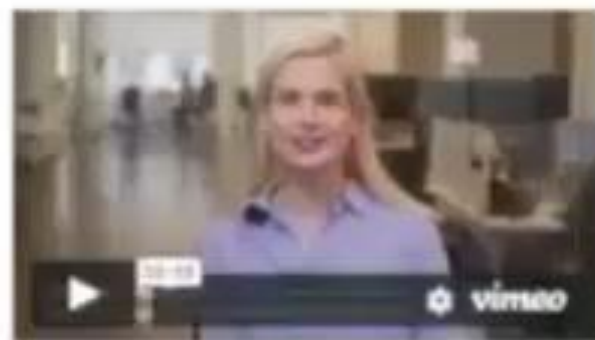


\$20,000

Minimum Investment

Summary

- This offering is expected to make quarterly interest payments.
- Please [review our overview](#) of vessel deconstruction for more information.
- Investors are participating in a loan facility that several vessels slated for deconstruction will pass through throughout the duration.





10th Annual Capital Link Greek Shipping Forum

"Opportunities & Challenges"

Friday, February 22, 2019 - Athens, Greece

IN COOPERATION WITH



LEAD SPONSOR



GLOBAL LEAD SPONSOR



GLOBAL GOLD SPONSORS



GLOBAL SPONSORS



EVENT SPONSORS



SUPPORTING SPONSORS



SPEAKERS DINNER SPONSOR



AWARD RECIPIENT CAPTAIN PARIS DRAGNIS



BREAKFAST SPONSOR



BAGS SPONSOR



LANYARDS SPONSOR



COFFEE SPONSORS



SUPPORTING ORGANIZATIONS



MEDIA PARTNERS

